





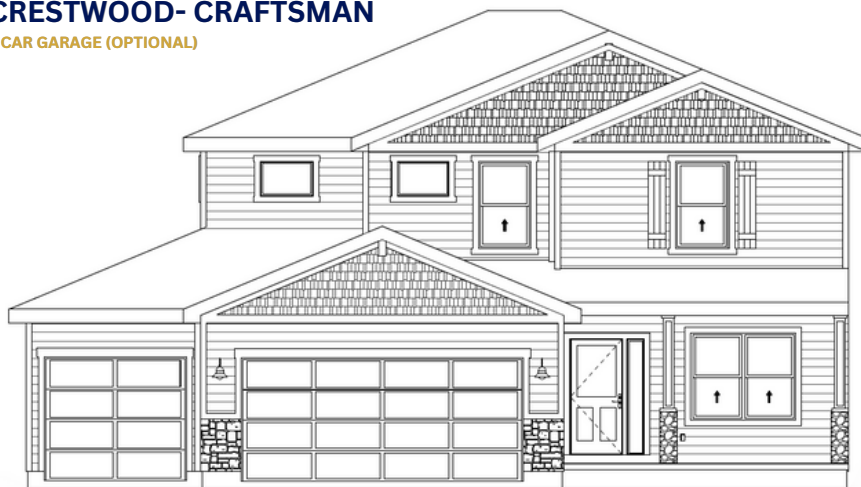


# THE CRESTWOOD

-  2 Story
-  3.5 Baths
-  4 Bedrooms
-  2 Car Garage
-  2292 Sq.Ft (aprx)
-  Optional lower level finish

## CRESTWOOD- CRAFTSMAN

3 CAR GARAGE (OPTIONAL)



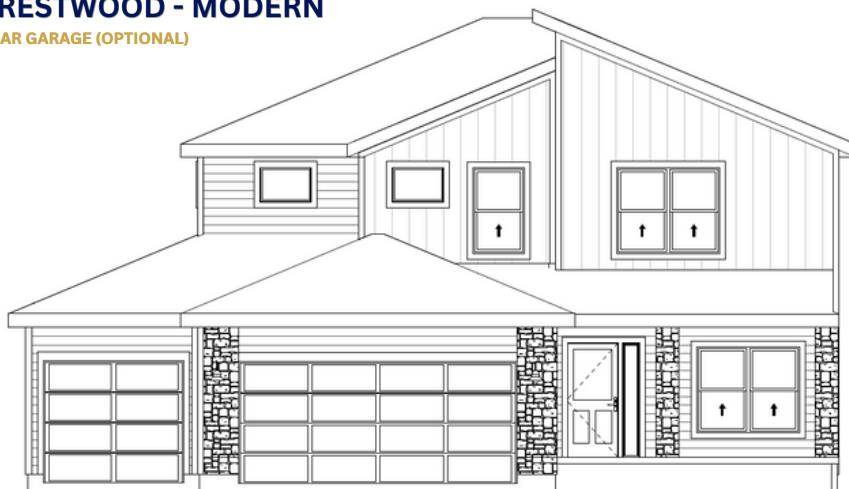
## CRESTWOOD - FARMHOUSE

3 CAR GARAGE (OPTIONAL)



## CRESTWOOD - MODERN

3 CAR GARAGE (OPTIONAL)



[www.avitalhomeskc.com](http://www.avitalhomeskc.com)

Elevation and floorplan illustrations are not to scale and for illustration purposes only. Optional features may be shown. Specifications, standards, features and details are subject to change without notice. Exterior material specifications and placement may vary per community.

Copyright Avital Homes, LLC 2024 v.020624

