






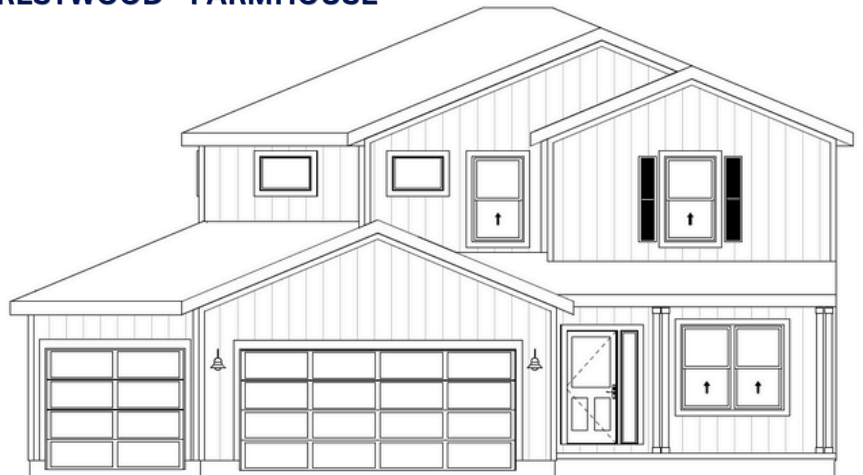
# THE CRESTWOOD

-  2 Story
-  4 Bedrooms
-  3.5 Bathrooms
-  3 Car Garage
-  2,333 Sq.Ft (aprx)
-  Optional lower level finish

**CRESTWOOD- CRAFTSMAN**



**CRESTWOOD - FARMHOUSE**



**CRESTWOOD - MODERN**

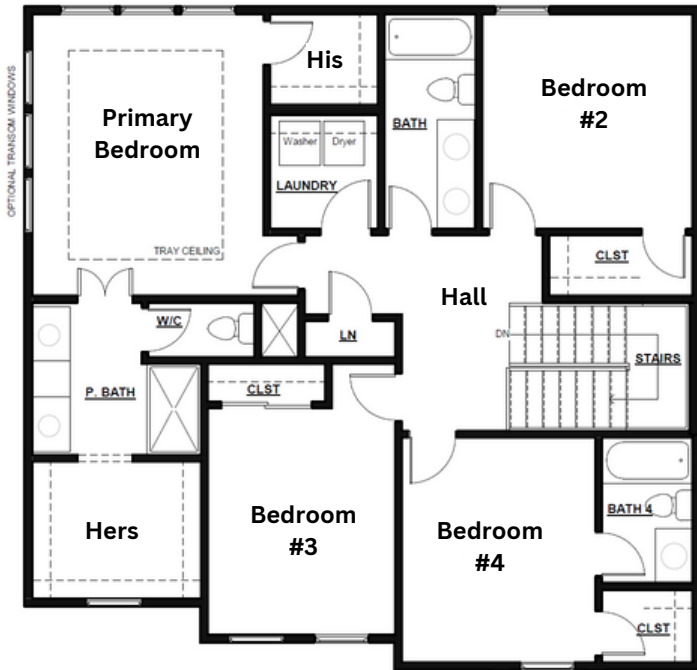


[www.avitalhomeskc.com](http://www.avitalhomeskc.com)

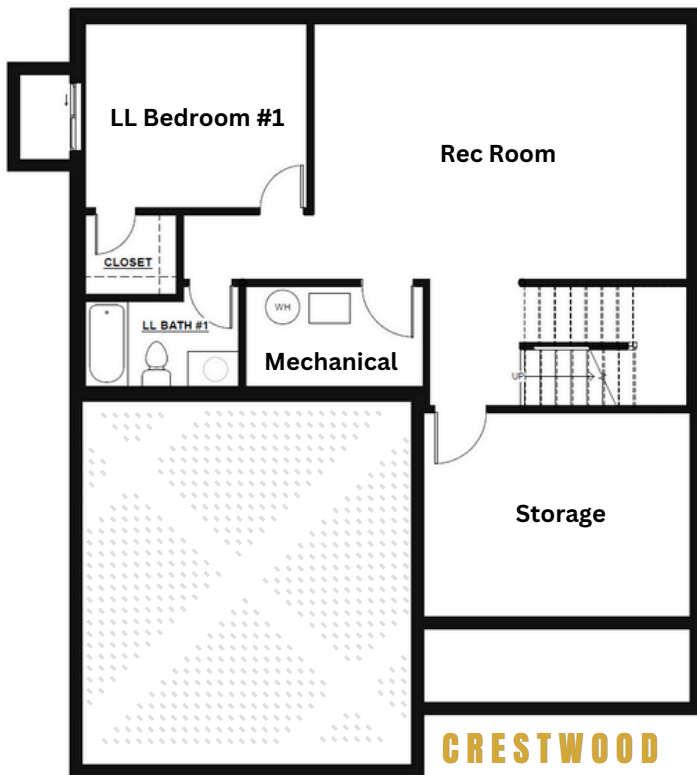
Elevation and floorplan illustrations are not to scale and for illustration purposes only. Optional features may be shown. Specifications, standards, features and details are subject to change without notice. Exterior material specifications and placement may vary per community.

Copyright Avital Homes, LLC 2025 v.09.14.25

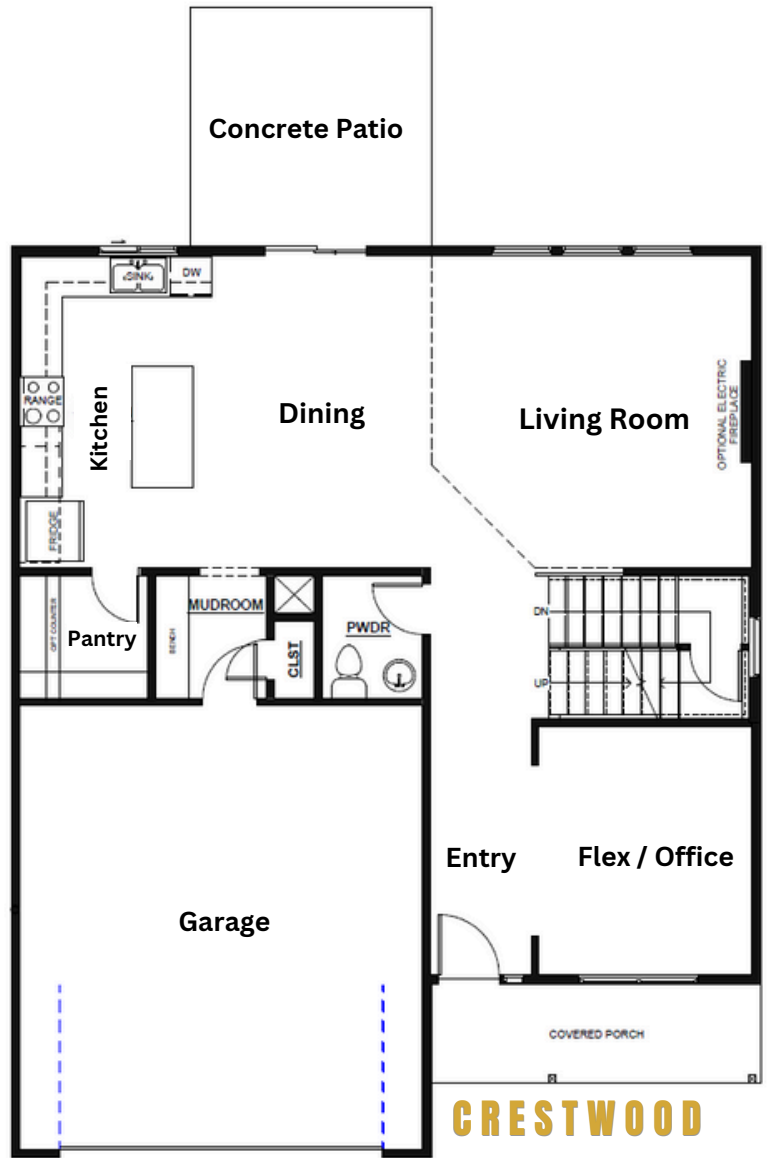
# THE CRESTWOOD



**CRESTWOOD**  
Upper Level



**CRESTWOOD**  
Optional  
Lower Level  
Aprx: 723 SQFT



**CRESTWOOD**  
Main Level



[www.avitalhomeskc.com](http://www.avitalhomeskc.com)

Elevation and floorplan illustrations are not to scale and for illustration purposes only. Optional features may be shown. Specifications, standards, features and details are subject to change without notice. Exterior material specifications and placement may vary per community. Copyright Avital Homes, LLC 2024 v.09.14.25